

# COUNTY OF PALM BEACH STATE OF FLORIDA

## ROADWAY IMPROVEMENTS

FOR

### SEMINOLE PRATT WHITNEY ROAD

FROM SOUTH OF NORTHLAKE BLVD TO NORTHLAKE BLVD  
AND

### NORTHLAKE BOULEVARD

FROM SEMINOLE PRATT WHITNEY ROAD TO 1920' EAST  
BOARD OF COUNTY COMMISSIONERS  
**PROJECT NO. 97512A3**

HAL R. VALECHE  
DISTRICT 1

PAULETTE BURDICK  
DISTRICT 2

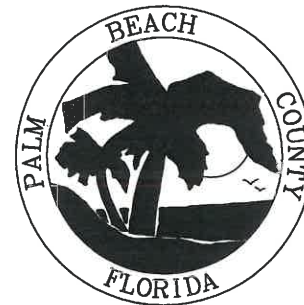
SHELLY VANA  
DISTRICT 3

STEVEN L. ABRAMS  
DISTRICT 4

MARY LOU BERGER  
DISTRICT 5

JESS R. SANTAMARIA  
DISTRICT 6

PRISCILLA A. TAYLOR  
DISTRICT 7



#### INDEX OF SHEETS

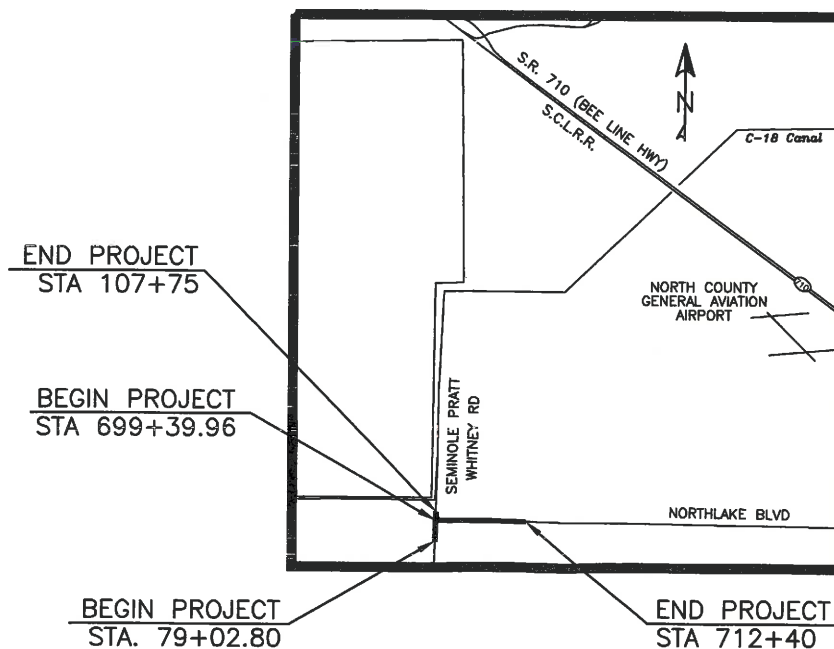
SHEET No.	DESCRIPTION
1	COVER SHEET
2-5	TYPICAL SECTIONS
6-7	DRAINAGE MAP
8	QUANTITIES & GENERAL NOTES
9-10	SUMMARY OF DRAINAGE STRUCTURES
11-15	DETAILS
16-17	STORM WATER POLLUTION PREVENTION PLAN
19-20	INTERSECTION PLATEAU
20	BENCHMARKS & REFERENCE POINTS
21-32	PLAN SHEETS
33-41	PROFILE SHEETS
42-44	SIDESTREET PROFILES
45-53	DRAINAGE STRUCTURE SHEETS
54-67	CROSS SECTIONS

VERTICAL DATUM: NATIONAL GEODETIC VERTICAL  
DATUM OF 1929 (NGVD '29)

THESE PLANS HAVE BEEN PREPARED IN ACCORDANCE  
WITH AND ARE GOVERNED BY THE FLORIDA DEPARTMENT  
OF TRANSPORTATION, DESIGN STANDARDS (DATED  
JANUARY, 2013) AND SUPPLEMENTS THERETO.

#### GOVERNING SPECIFICATIONS:

APPLICABLE GOVERNING SPECIFICATIONS OF THE STATE OF  
FLORIDA DEPARTMENT OF TRANSPORTATION, AND PALM  
BEACH COUNTY, ARE CONTAINED IN THE CONTRACT  
DOCUMENTS FOR CONSTRUCTION OF THIS PROJECT.



#### LOCATION MAP

N.T.S.  
SEC. 18, 19 TWP. 42S, RGE. 41E

	PROJECT TOTAL	
	MILES	FEET
ROADWAY	0.790	4,172.24
BRIDGES	0	0
NET LENGTH OF PROJECT	0.790	4,172.24
EXCEPTIONS	0	0
GROSS LENGTH OF PROJECT	0.790	4,172.24

ATTENTION IS DIRECTED TO THE FACT THAT  
THESE PLANS MAY HAVE BEEN ALTERED IN  
SIZE BY REPRODUCTION. THIS MUST BE  
CONSIDERED WHEN OBTAINING SCALED DATA.

#### ENGINEER'S CERTIFICATION

I HEREBY CERTIFY THAT THE ATTACHED PLANS AND DESIGN ARE IN  
SUBSTANTIAL COMPLIANCE WITH THE DESIGN STANDARDS AND  
CRITERIA IN EFFECT ON THIS DATE FOR PALM BEACH COUNTY  
ENGINEERING DEPARTMENT AND THE STATE OF FLORIDA  
DEPARTMENT OF TRANSPORTATION.

DATE: \_\_\_\_\_ PROFESSIONAL ENGINEER # \_\_\_\_\_ 50449

HENRY W. DEIBEL, JR., P.E.

PALM BEACH COUNTY  
ENGINEERING AND PUBLIC WORKS  
ROADWAY PRODUCTION  
P.O. BOX 21229  
WEST PALM BEACH, FLORIDA



Date:	
By:	
Revision:	
No:	
Scale:	N.T.S.
Approved:	HWD
Drawn:	AJG
Checked:	HWD
Date:	11/2010

Project: ROADWAY IMPROVEMENTS  
FOR  
**SEMINOLE PRATT WHITNEY ROAD**  
FROM SOUTH OF NORTHLAKE BLVD.  
TO NORTHLAKE BLVD.

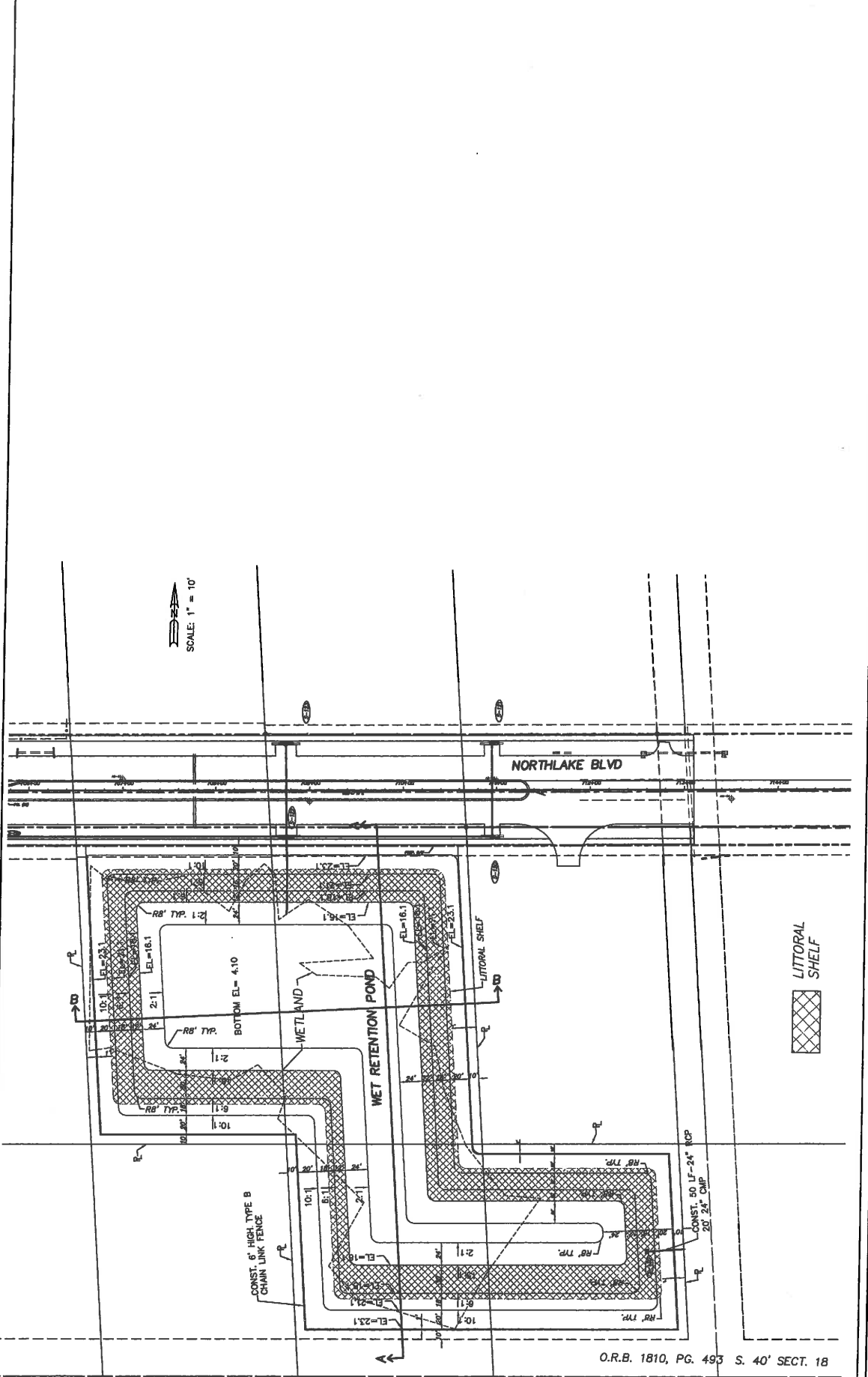
Sheet:	1
Of:	67
Project No.	
LNW#	A585



1500 Gateway Boulevard, Suite 200  
Boynton Beach, Florida 33426

Tel: (561) 697-7000 Fax: (561) 369-4731  
www.arcadis.com

EB767 / LB7062




O.R.B. 1810, PG. 493 S. 40' SECT. 18

Sheet: 14  
Of: 59  
Project No. 97-512A3  
LHW 0385

Project: DETAILS  
FOR  
SEMINOLE PRATT WHITNEY ROAD  
SOUTH OF NORTHLAKE BLVD.  
TO NORTHLAKE BLVD.

Scale: NTS  
Approved: RMD  
Drawn: AJG  
Checked: HMD  
Date: 11/2010  
Field Book No.:

PALM BEACH COUNTY  
ENGINEERING AND PUBLIC WORKS  
ROADWAY PRODUCTION  
P.O. BOX 21229  
WEST PALM BEACH, FLORIDA



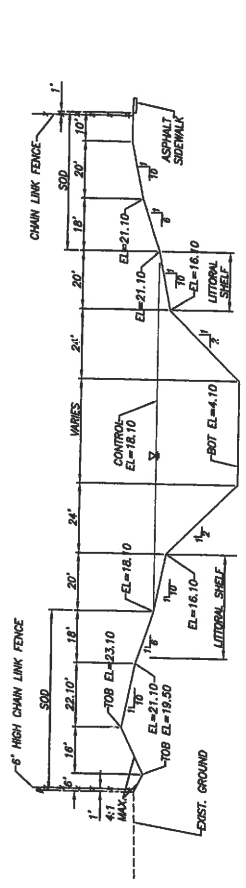
No.	Revision:	By:	Date:

EB7917 / LB7062

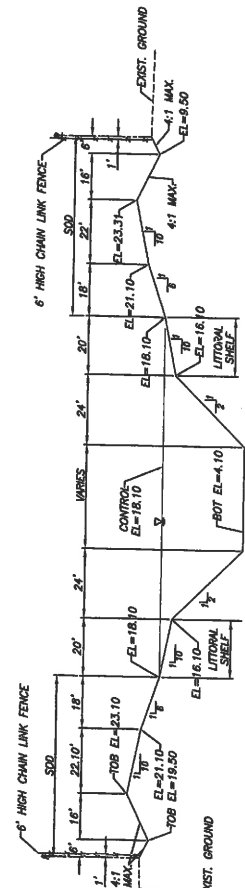


**ARCADIS**  
ARCADIS G&M, INC.  
201 Vista Parkway  
West Palm Beach, Florida 33411  
Tel: (561) 897-7000 Fax: (561) 897-7191  
www.arcadis-us.com

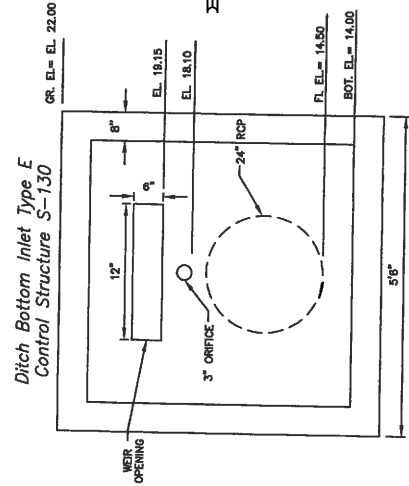
ORIGINAL PERMITTED  
Pond  
EXHIBIT A



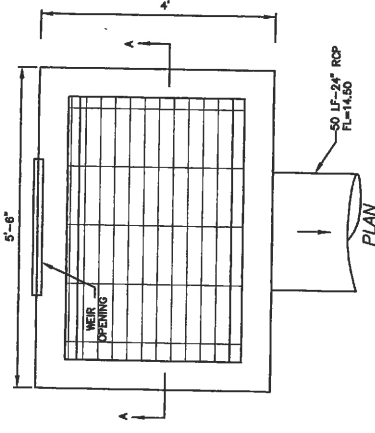
RETENTION POND SECTION A-A (per to survey)



RETENTION POND SECTION B-B (per to survey)



SECTION A-A



SECTION A-A

**ARCADIS**  
 ARCADIS G&M, INC.  
 2085 Vista Parkway  
 West Palm Beach, Florida 33411  
 Tel: (561) 897-7000 Fax: (561) 897-7181  
 www.arcadis-us.com

No:	Revision:	By:	Date:

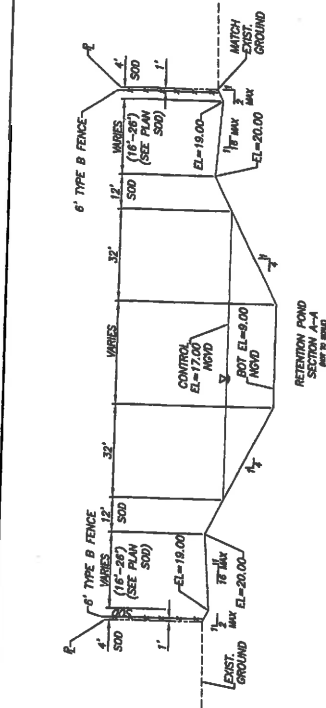
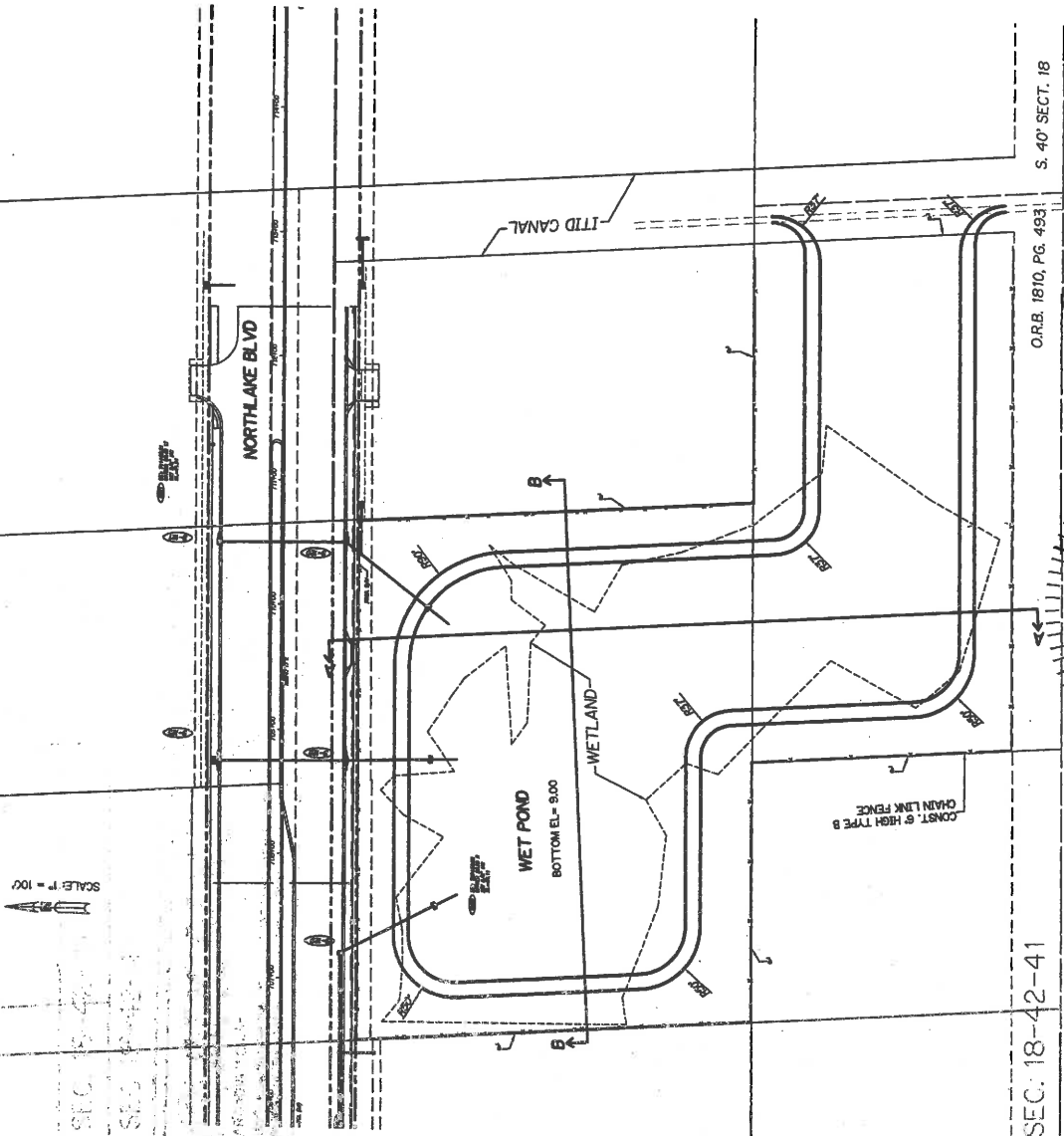
ER7917 / LB7062

Scale: NTS  
 Approved: HWD  
 Drawn: A.G  
 Checked: HWD  
 Date: 11/20/10  
 Field Book No:

Project: DETAILS  
 FOR  
 SEMINOLE PRATT WHITNEY ROAD  
 SOUTH OF NORTHLAKE BLVD.  
 TO NORTHLAKE BLVD.

Sheet: 14  
 Of: 59  
 Project No.:  
 DWG 1463

ORIGINAL PERMITTED  
 POND  
 EXHIBIT A



INDIAN TRAIL IMPROVEMENT DISTRICT (ITID) UPPER M-1 BASIN

**BASIN INFORMATION:**

- DRY SEASON CONTROL ELEVATION = 17.00' NGVD
- WET SEASON CONTROL ELEVATION = 16.00' NGVD
- BASIN DESIGN STORM EVENT = 10 YEAR 3 DAY
- BASIN 10 YEAR 3 DAY STAGE = 21.30' NGVD
- BASIN 25 YEAR 3 DAY STAGE = 21.80' NGVD
- ITID WATER QUALITY IN CANAL STAGES = 17.00' NGVD TO 19.20' NGVD

SCALE: 1" = 100'

SEC: 18-42-41  
SEC 19-42-41

C.R.B. 1810, PG. 4931 S. 40' SECT. 18

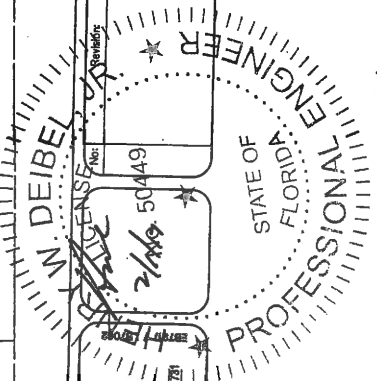
**ARCADIS**  
ARCADIS U.S., Inc.  
1500 Gateway Boulevard, Suite 200  
Bayside Beach, Florida 33428  
Tel: (888) 987-7000 Fax: (888) 398-7271  
www.arcadis.com

By: *[Signature]* Date: *[Blank]*  
No: 50449  
2/18/09

**PALM BEACH COUNTY**  
**ENGINEERING AND PUBLIC WORKS**  
**ROADWAY PRODUCTION**  
P.O. BOX 21229  
WEST PALM BEACH, FLORIDA

Scale: NTS  
Approved: HWD Aug  
Drawn: AUG  
Checked: HWD  
Date: 11/2010  
Field Book No:

Project: DETAILS FOR SEMINOLE PRATT WHITNEY ROAD SOUTH OF NORTHLAKE BLVD. TO NORTHLAKE BLVD.  
Sheet: 15 Of: 67  
Project No. 97-122A3  
Date: 11/07/2008



*Proposed Modified Ponds/Canal*  
**EXHIBIT B**

